

webtracker@trbo™: advanced cloud-based AVL

Network-independent fleet management, reporting and alerts

Track your fleet from any browser and get extensive reporting

webtracker@trbo™ is a cloud-based service that tracks radio assets: it excels in reporting, flexibility, user management and reliability.

Besides providing maps of group of radios or individual radios with animated breadcrumbing, some of the reports include:

- trip detail: start time/location, and stop time/location, of various "trips"
- geozone: arrival/departure times, time spent within each and driving time between them
- ignition detail/summary: displays time between various Ignition On/Off events
- GPS-based odometer reading (miles)
- Account and user login: last account login times and login time for users within the account

Within webtracker@trbo it is possible to create multiple accounts (e.g. customers). Each account has:

- its own set of radios which can be assigned to one or more group (e.g. security, maintenance, etc.)
- multiple users assigned to each group or special access rights

It is also possible to define event rules that trigger alert notification via email or changing the icon, such as exiting geocorridors or an emergency or a periodic oil change.

Ideal for both operators and carriers!

webtracker@trbo™ interfaces via IP to subscribers via both TABLETmedia's text@trboPlus Connect Plus data gateway and iTalkie™/RG radio gateway for all other networks (simplex, conventional, IP Site Connect, Capacity Plus, LCP). Simultaneously!

That means that an operator/carrier can simultaneously support older and newer networks, even if they are on different bands. Even more powerful, customers can see their subscribers in one single interface independently of what network or technology they are on.

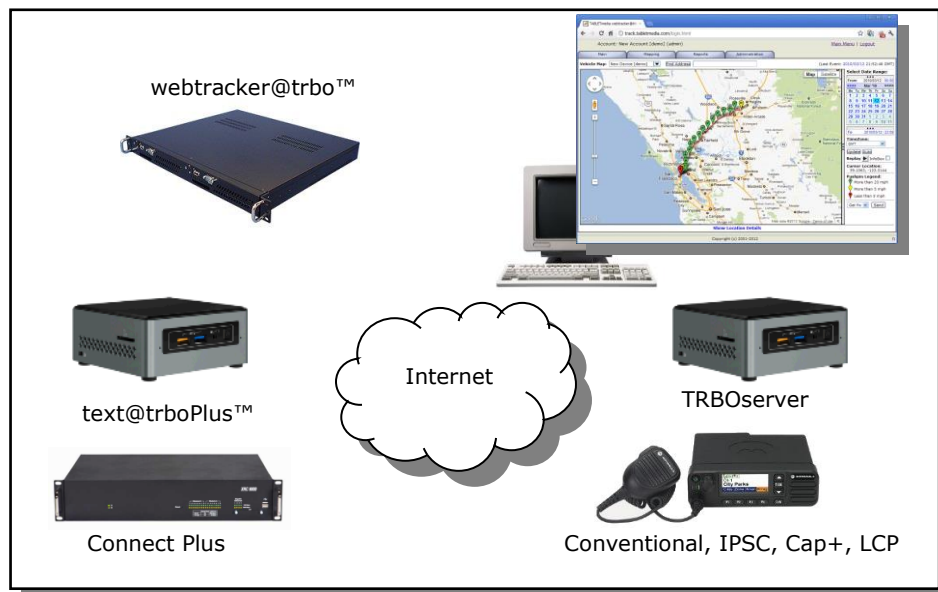
Managing customers and assets is easy too since each customer is assigned a specific number of radios.

Selected Features

- Maps of groups or individual radios
- Animated breadcrumbing
- Easy-selectable reporting range
- Center maps on radio
- Drop-down menus
- Several pre-defined reports
- Customizable reports
- Geofencing, geocorridors
- FindNow and FindAddress buttons
- Rule-based alerts
- OpenStreetMaps, Google Maps
- Ready for additional car telematics

Typical Applications

- Transportation
- Hospitality
- Education
- Other commercial markets



AUTHORIZED
APPLICATION PROVIDER

MOTOTRBO™

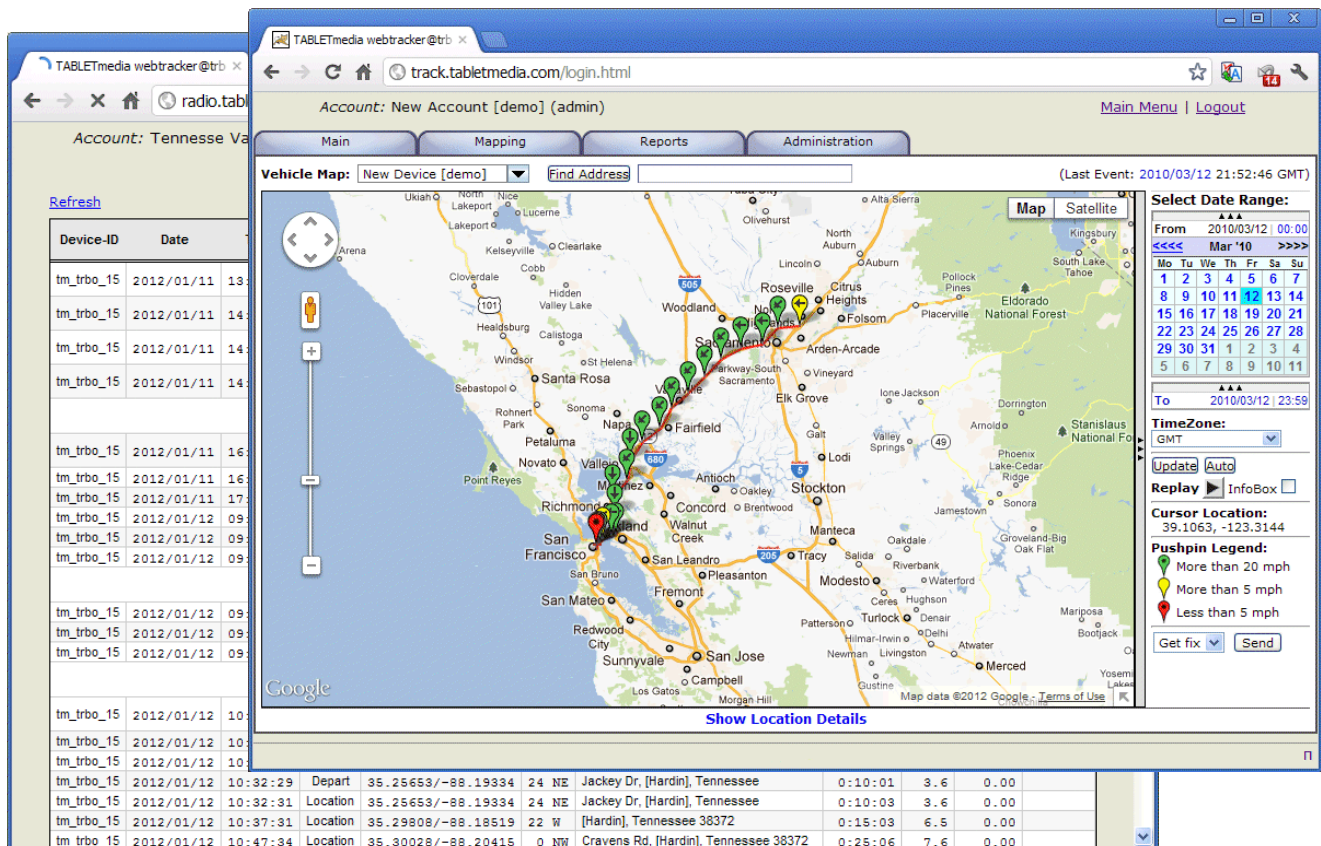
MOTOROLA SOLUTIONS

Easy to deploy

- Runs on any browser and on any device

Professional services:

- Customizations (reports, rules, etc..) available for special requirements



TABLETmedia, Inc.
San Francisco, CA 94123
Tel: +1 (415) 567-8100

<https://tablet.media> - 1/21
Copyright © 2001-2021 TABLETmedia, Inc. – All rights reserved.
TABLETmedia webtracker@trbo™, eztracker@trbo™, phone@trbo™, text@trbo™, iTalkie™ and iFon™ are trademarks of TABLETmedia, Inc.
All other trademarks belong to their respective companies.

TABLETmedia