

# Integrated Dispatch

## PTT, messaging, telephone, fleet management and AUX panel

TABLETmedia Dispatch is a reliable software-based console which integrates multiple capabilities with an optimized visual and operational user experience.

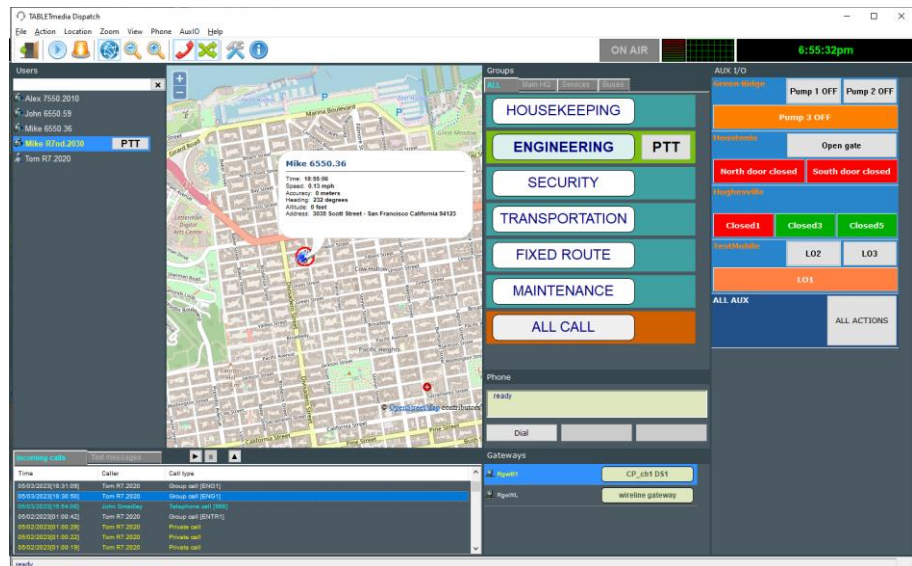
It seamlessly works with TRBOserver™ integration server (for mass notifications, Avigilon, telephone interconnect, indoor location, WorkSafe™, etc.), TRBOrecorder™ wireline logger recorder and TRBOMonitor™ for system diagnostics and monitoring.

### Optimized screen layout

The console makes efficient use of the available real estate, keeping the eye of the operator focused on a single screen. It supports touchscreens for immediate action.

### Multiple network topologies

Dispatch either uses a semi-wireline interface to the radio network, or traditional gateways and control stations to mix digital conventional, trunked, analog, and P25 channels.



### Intuitive operation

Dispatch includes innovative features:

- The PTT button indicates the active talkgroup or subscriber
- Intelligent callback: Double clicking on the call log automatically switches to the talkgroup of the incoming call, or calls back a subscriber or a telephone number
- Unlimited instant replay: right-clicking on the call log plays the PTT or telephone call. Recordings are purged after a preset number of days and they can also be exported.

### Zones tabs

All talkgroups are listed in a single and sizable column for easy visual reference and they can be grouped into zones. The talkgroups and zones management is very simple and accessible by every dispatcher.

### Browser window

Alternatively to the basic real-time GPS tracking, the console can use the embedded browser to display webtracker@trbo™ advanced GPS tracking, or job tickets, or other functions.

### Automatic channel steering

When used on conventional or IP Site Connect systems, selecting a talkgroup changes the control station channel.

### Telephone endpoint

The SIP phone works like a desk phone extension to answer or make calls. Dialing can be done via the address book or by typing the number. During a call:

- Incoming PTT audio can be routed to external speakers
- The phone call is muted while placing an outbound PTT call
- Calls are easily transferred to talkgroups or subscribers

Telephone and PTT audio is mixed without external devices.

### Administrative settings

Individual features are enabled per position and password protected. For instance, administrators can prevent operators from changing the assigned talkgroups, disabling radios, or text messaging.

### AUX panel

The console uses a unique confirmed telemetry protocol to monitor or control remote devices like pumps, gates, etc. with programmable buttons and status indicators. The ALL AUX button activates all devices at once.

### Emergency notifications

On critical events, the console activate tones, flashing screen elements, and external devices such as lights and sirens.

Selected PTT features	Other features
Multiple simultaneous incoming calls	Remote control station channel steering
Private and group calls with caller-ID	Full-duplex intercom calls between dispatchers
Private calls: radio alert, check, monitor, de-key, enable and disable	Mass notifications alerts (e.g. fire panels, video surveillance, machinery, NOAA weather alerts, panic buttons, etc.)
Group calls: select/unselect, cross-mute, L+R audio with mute	Transmit VU Meter and time clock
Press and hold on talkgroup or subscriber for PTT call	Instant subscriber name search
Emergency tone and flashing panel with multi-console reset	Subscriber name alias or actual employee name

Requirements	Details
On-premise	PC with Windows 10 or newer OS, 4GB RAM, Celeron-class CPU, any size SSD
	Windows-compatible microphone and speaker or headset
	TCP unicast or UDP multicast network connectivity to gateway(s).

### Thin dispatch client

The Thin Client offers basic PTT and text messaging operation and works with the Dispatch console in specific configurations.



### UNIQUE EXPERIENCE

Understanding the critical requirements of your business, we have grown by listening and appreciating your trust. We can only make great products if they need no support or, as needed, we are there to promptly help you. Since 2001 we have provided device manufacturers, dealers and end-customers with best-in-class prompt and hands-on support. All of our products are developed by us, right here in the USA. They are tightly integrated and modular to scale and meet your requirements now and in the future.

